

The sudden occurrence of defects always comes at an inappropriate moment. Unforeseen downtime is very expensive, while delivery times of replacement parts are often long. However, it is possible to continue operation of a damaged installation. For these cases Doctor Bibber Asset Services has developed the **MOBILE BIBBER**, which enables 24/7 monitoring of critical equipment. The **MOBILE BIBBER** makes intensive monitoring effective, using the **MOBILE BIBBER** a damaged installation can keep running in a responsible way, until a more opportune moment for maintenance is found.



Product description

To monitor the condition of a machine, the **MOBILE BIBBER** can be equipped with up to 12 sensors, which are placed on the most critical locations of a machine. The vibrations which are measured tells a lot about the actual condition of an installation. The **MOBILE BIBBER** performs measurements 24/7. These measurements are sent to the Doctor Bibber Office where the data is checked by our certified analysts. The measurement readings will be analysed by an established interval. After each analysis the current condition of the equipment is reported and forwarded to the customer, whether the condition has changed or remained stable. With the help of the **MOBILE BIBBER** machinery is kept in operation in a responsible way, even when (bearing) damages are determined.

Measure Interval	Analyse Interval
15 min	15 min
30 min	Hour
6 hr	Day
12 h	Week
24 hr	Month

MOBILE BIBBER DB163

The **MOBILE BIBBER** is used worldwide. Depending on traveling time, we strive to have it installed and operational within 24 hours.

Specifications:

- 12-channels measurement system
- Vibration Signal
- +/- 10V
- 4-20mA
- Up to 20kHz
- Optional alarm analog out 24V
- RPM logging (TTL input or tachometer)

Measurement setup:

- Time signals
- Velocity/Acceleration/Bearing envelope spectrum

Trendlines, spectra and waterfallplots can be displayed.



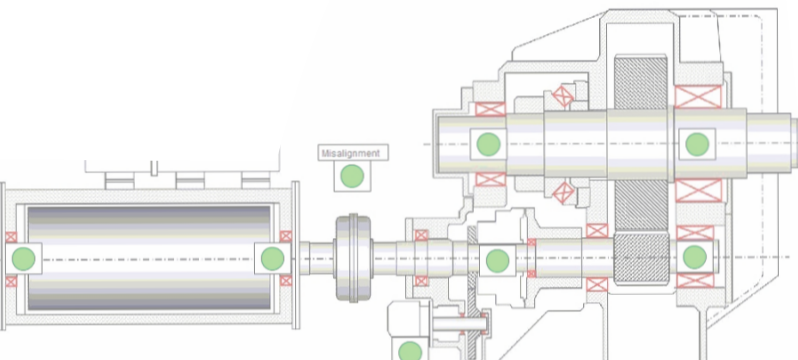
Rental price

Per week (1 st month)	€ 750,-
Per week (upward of 2 nd month)	€ 575,-
Per week (upward of 3 rd month)	€ 375,-

Prices excluding (dis)assembly, analysis and reporting costs

Display/Online dashboard

The real time condition of the monitored installation can be displayed on an onsite dashboard. By the means of coloured labels each sensor is shown on the screen. The benefit of this online dashboard is that an engineer can react immediately when onscreen values are exceeding the established alarms. Each dashboard is custom made to fit the monitored installation. The dashboard can be shown on a screen supplied by DB Asset Services, or it can be integrated on a screen supplied by the customer.



Running in 24hrs

Doctor Bibber has extensive experience in quick deployment of online measurement devices. With these devices the condition of installations can be monitored remotely. A rental **MOBILE BIBBER** can be deployed in the Netherlands within 24 hours. The time required for foreign deployment is depending on location and traveling time. With the use of the **MOBILE BIBBER**, it is possible to continue operation of a damaged installation in a responsible way to postpone maintenance to a more suitable moment.

